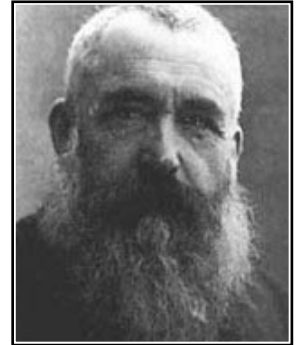
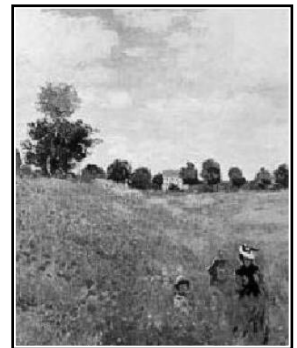


THE CALIFORNIA POPPY COLLECTION

Inspired by the gardens of Claude Monet's home in Giverny, France, Robert Held has taken the classic impressionist style to a new level. Combining subtle background colors with vivid red poppies, Robert is proud to present the newest addition to the hugely successful Flower Line: The California Poppy Collection.



Wanting to take the Impressionist Collection in a new direction, Robert Held set out to spruce up an old favourite and instead found himself blending several glass techniques into one. With the widespread success of the Flower Line, Robert decided to marry the three-dimensional flowers of The Flower Line with the subtle brush strokes of classical impressionist paintings but was struggling to find just the right combination of texture and shape.



While working on the new series, Robert Held came across one of Monet's most famous paintings: "Poppy Field". Though he had seen it many times and always loved the painting, he took particular notice of the details this time – Monet's wife and son walking through a field of red poppies; their friends waiting atop the hill; a nice old farm house in the horizon and suddenly, the California Poppy Collection was coming to life in front of his eyes. The stunning red poppies combined with the soft muted background tones make this collection a modern classic – perfect in a living room and at home in a French country garden.